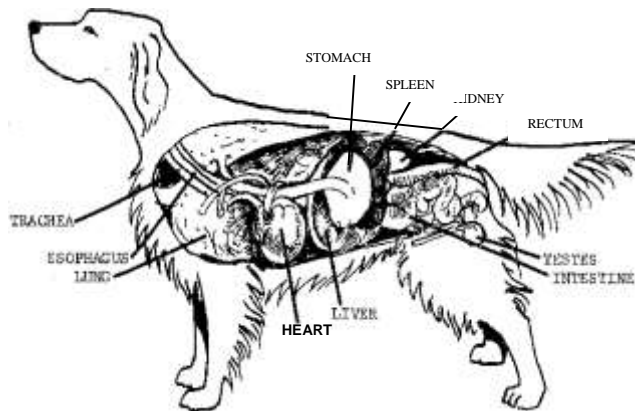
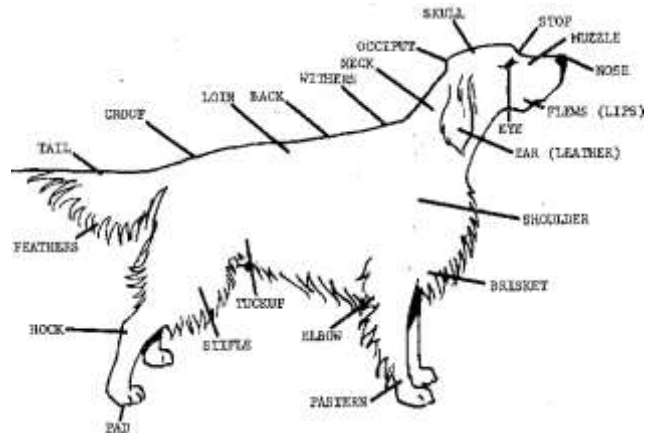




DOG PARTS

EXTERNAL



INTERNAL

EXTERNAL PARTS OF THE DOG

Brisket – The chest or rib cage between and just behind front legs

Croup – Area of the back from hip bones to point where tail meets the body

Flews – Loose hanging lips

Hock – Joint formed by second thigh and back pastern

Knee – Foreleg joint between elbow and foot

Leather – The ear flap

Loin – The sides between the ribs and hip bones

Muzzle – The jaws, lips and nose

Occiput – Bump at the top rear of the skull

Pastern – Part of foreleg between knee and foot

Stifle – The joint formed by the upper and lower thighs

Stop – The area between the eyes and between skull and muzzle

Tuck Up – (Flank) Abdomen drawn up tight to loins

Withers – Top of shoulder blades at junction of neck